

Volume 28, Number 4

25 TREASURES

FOR DISCERNING COLLECTORS



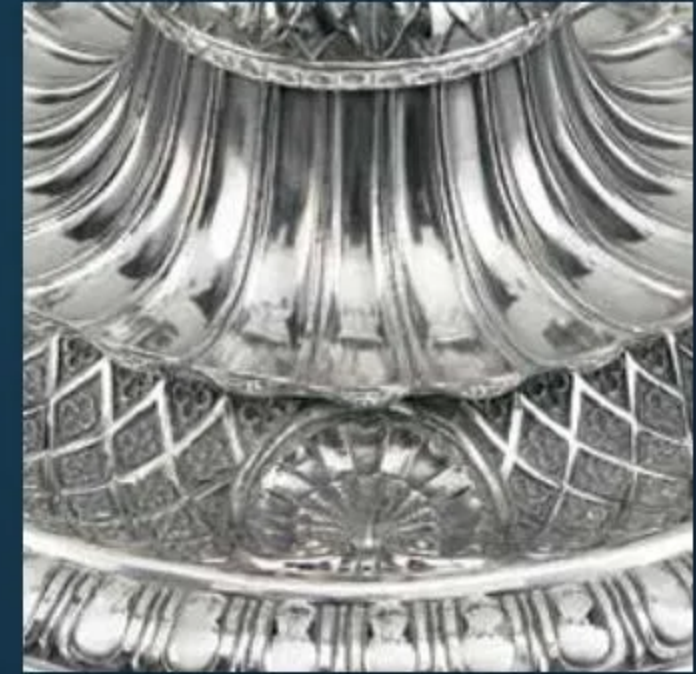
M.S. Rau
FINE ART • ANTIQUES • JEWELS



JEWELS



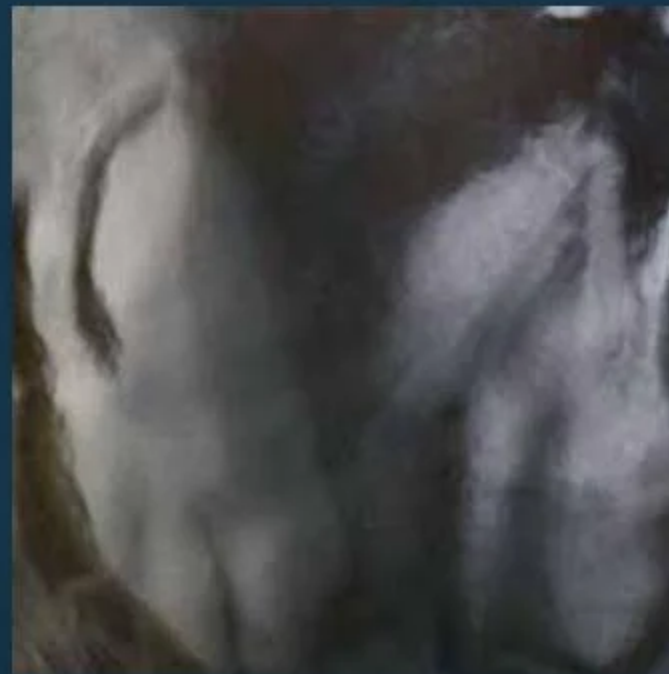
PAINTINGS



SILVER



STONE



BRONZE



ENAMEL

25 TREASURES

FOR DISCERNING COLLECTORS

History, rarity and beauty are qualities that we strive towards with every object we acquire. Our latest catalog is a celebration of the excellence of our collection. From silver and bronzes to gemstones and enamel, these 25 treasures represent the museum-worthy objects we are proud to offer discerning collectors around the world.



Discover more at msrau.com





Jan Thomas van Kessel

1677-1741 | Flemish

A Peasant Country Scene

Early 18th century | Oil on canvas

Signed "J.T. van Kessel" (lower left)

A quintessential example of the finest Flemish genre painting, this oil reflects the blend of playfulness and technical acuity that defined the style of Jan Thomas van Kessel. The artist invites viewers into a gathering of peasants, highlighted at its center by a couple in the midst of a lively dance. Such genre paintings in the tradition of David Teniers and the Brueghel family (to whom he was related by marriage) were incredibly popular during the 17th and 18th centuries, serving as a reminder of the simple pleasures of pastoral life amid the scenic Flemish landscape. #31-0198.

Canvas: 40¹/₄"h x 54¹/₄"w | Frame: 52³/₄"h x 66⁵/₈"w







Henry Wallis

1830-1916 | British

Sir Walter Raleigh in the Tower

Dated 1857 | Oil on panel

Signed and dated "H. Wallis 1857" (lower right)

One of the three great masterpieces of the artist's career, this Pre-Raphaelite oil on panel by Wallis depicts Sir Walter Raleigh during his imprisonment in the Tower of London. Highly detailed and finished, it reflects the vibrant colors for which Wallis and his fellow Pre-Raphaelites were known. Not only is the work historically accurate in its details, but the painting is also filled with the symbolic references Pre-Raphaelite painters loved to include. It was exhibited at the Royal Academy in 1858, a testament to both its overall quality and the artist's regard for the work. #31-3675.

Panel: 25"h x 30"w | Frame: 32"h x 37"w







Paul César Helleu

1859-1927 | French

La femme aux fleurs (Portrait de Mathilde See)

Circa 1910 | Pastel on linen

Signed "Helleu" (lower left)

Helleu is regarded as one of the greatest artists of the Belle Époque age who, alongside Boldini and Sargent, mastered the art of depicting the modern women of his era. This example of his work captures the likeness of Mathilde See, a Parisian-born still life painter who represents a powerful model of modern French femininity. Monumental in size, the work was previously in the collection of A. Alfred Taubman, one of America's most successful entrepreneurs and owner of Sotheby's. #31-2851. \$425,000

Linen: 49¹/₄"h x 35¹/₂"w | Frame: 61³/₈"h x 48¹/₄"w







Achille Laugé

1861-1944 | French

Almond Trees in Spring

Late 19th/Early 20th century | Oil on canvas

Signed "A. Laugé" (lower right)

This Neo-Impressionist landscape by Laugé captures an orchard in late spring in his distinctive and highly modern style. Technically magnificent, the work displays a wonderful impasto that has been achieved thanks to the artist's technique of applying his paint in quick, precise dabs. One of the foremost artists of the Post-Impressionist period, Laugé's works are beloved for his sensitivity to light, shade and tone, all clearly on display in this oil. #31-3146.

\$228,500

Canvas: 21" h x 28¹/₂" w | Frame: 32³/₄" h x 40" w







Jean-Gabriel Domergue

1889-1962 | French

Ariane

20th century | Oil on board

Signed "Jean Gabriel Domergue" (lower right)

This alluring work by Domergue epitomizes the trademark subject for which he is most highly celebrated – fashionable, swan-like Parisian women with an unmistakable blend of confidence and modern elegance. Known as *les belles parisiennes*, his captivating models embody the *joie de vivre* of post-World War I Paris, while their seductive air earned him the moniker, the "inventor of the pin-up." #31-3616. \$168,500

Canvas: 32"h x 25¹/₂"w | Frame: 41¹/₂"h x 35¹/₈"w







Pablo Picasso

1881-1973 | Spanish

Homme à l'agneau, mangeur de pastèque et flûtiste

Dated 1967 | Crayon on paper

Signed and dated "Picasso / 3.2.67 / II" (upper right)

Composed in 1967, this imaginative work by Picasso was part of a playful series of drawings on the subject of Bacchus and bacchanalian pursuits. He captures the god of wine eating a watermelon, a favored motif of the artist that first appeared in his seminal *Demoiselles d'Avignon* of 1907. Bacchus himself recalls the artistic legacy of Caravaggio, revealing the depth of Picasso's link to the Baroque tradition. #31-3820. \$648,500

Paper: 19"h x 25"w | Frame: 32"h x 37³/₄"w





3.2.4

II

Picture



Andy Warhol

1928-1987 | American

Shadow

Circa 1979 | Acrylic and silkscreen ink on canvas
Andy Warhol Estate stamps (en verso)

Warhol was the foremost Pop artist of his generation, and his *Shadow* series of the 1970s and 80s represents his very brief engagement with abstraction. Derived from a photo taken at his famed New York studio, The Factory, the figure itself is hidden in shadow, leaving only a dark, enigmatic absence. Pared down to the bare essentials, Warhol's *Shadow* reveals the artist at his most vulnerable — and his most innovative. #31-3154. \$395,000

Canvas: 14”h x 11”w | Frame: 22”h x 19¼”w







After François Girardon

French

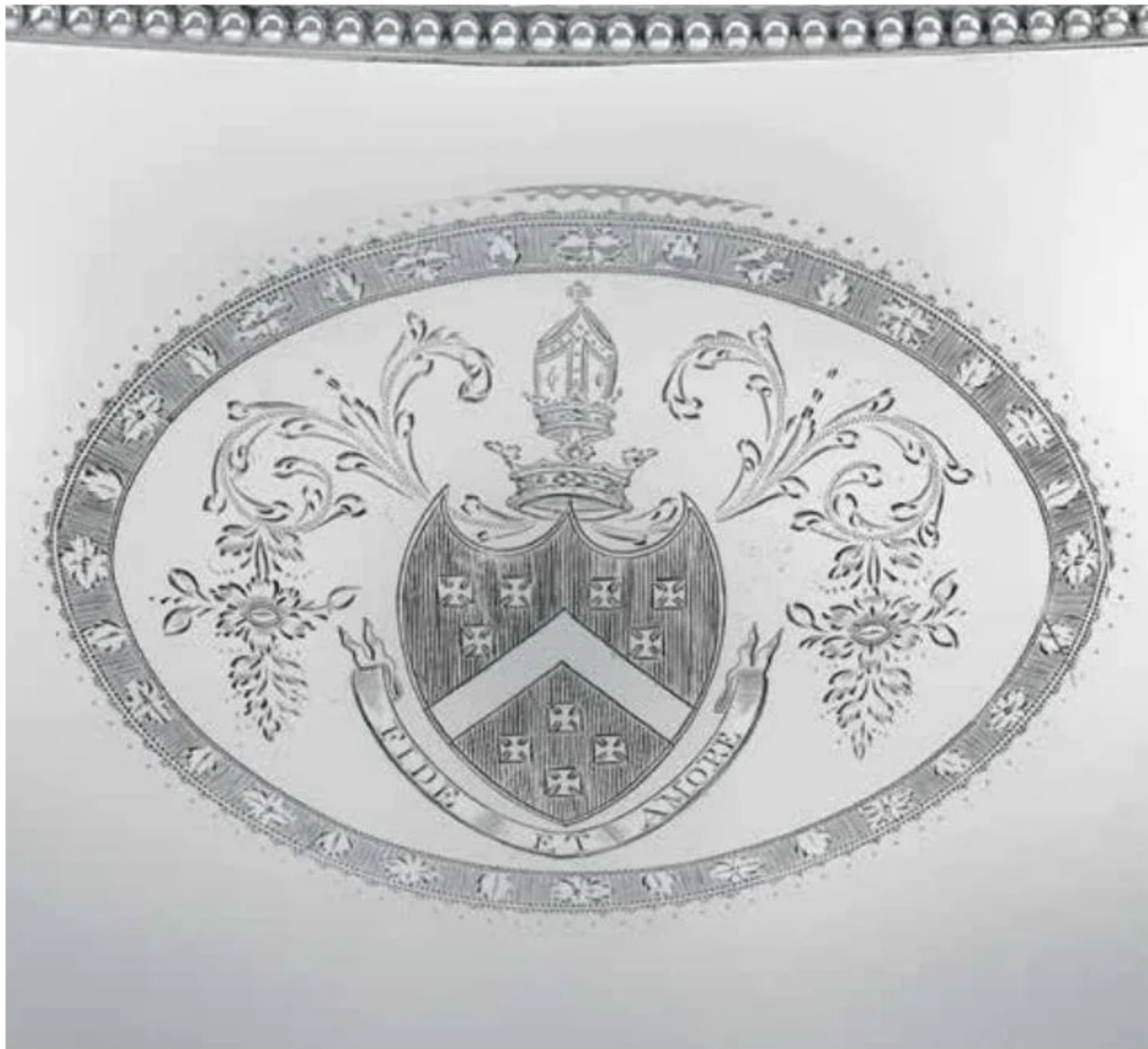
Equestrian Portrait of Louis XIV

Circa 1820 | Bronze

Louis XIV was one of the most significant monarchs in history, and the most important representation of the legendary Sun King was the monumental equestrian bronze created by François Girardon in 1685. Sadly, the monument was destroyed during the French Revolution in 1792, with only the foot of the original remaining today (Musée du Louvre). The present bronze represents a rare reduction of Girardon's original; other castings are prominently displayed in many of the great museums of the world including the British Royal Collection, the State Hermitage Museum and the Louvre. #31-2479. \$228,500

With base: 37¹/₄"w x 25"d x 73"h





Hester Bateman

1708-1794 | British

Presentation Soup Tureen

Hallmarked London, 1787 | Sterling silver

One of Bateman's most famous creations, this tureen is one of only two oversized objects ever made by the legendary silversmith. It was specially ordered for and presented to Sheriff Robert Harding in 1798 for his bravery in helping to preserve law and order in the city of Cork during the Irish Rebellion. Bearing the arms of both Robert Harding and the city of Cork, it is also engraved with an inscription commemorating the sheriff's efforts during the rebellion. #31-3022. \$148,500

17³/₄"w x 8¹/₂"d x 11¹/₂"h







Jefferys & Jones of London

1775-1793 | British

British Ambassadorial Flatware Service for 60

Hallmarked London, 1783 | Sterling silver and gilded silver

This flatware set was commissioned by King George III for the British Embassy in Paris. Made when the French capital was the most important diplomatic post in the world, this set would have witnessed discussions around Europe's most historic events, from the birth of the American nation to the beheading of Louis XVI and the rise of Napoléon. Supplied by the Royal Goldsmiths Jefferys & Jones of London, the 409-piece service for 60 features flatware by two renowned British silversmiths, with entrée pieces by George Smith and silver-gilt dessert pieces by the celebrated Thomas Northcote, each of which is engraved with the Royal Coat of Arms. #31-2983. \$298,500

Case: 33¹/₂"w x 20³/₄"d x 21³/₄"h





Paul Storr

1771-1844 | British

George III Candelabra and Candlesticks

Hallmarked London, 1808 | Sterling silver

This extraordinary candelabra and candlestick set created by Storr for Rundell, Bridge and Rundell is a remarkable example of Georgian artistry from one of history's most celebrated silversmiths. Each of the four sticks is enveloped in trelliswork decoration displaying Storr's signature balance of classical and French Huguenot Baroque influences. Grand in size, they reflect the remarkable sculptural quality of Storr's greatest works. #31-3081. \$495,000

Candelabra: 17³/₈"w x 6⁷/₈"d x 27³/₄"h

Candlesticks: 6⁷/₈"dia. x 16¹/₈"h





George Clements

19th century | British

William Gladstone Wine Coolers

Hallmarked London, 1825 | Sterling silver

Outstanding in provenance and artistry, these wine coolers by the Regency silversmith Clements were presented by British Prime Minister William Gladstone to his son, Henry Neville, as a wedding gift in 1890. Gladstone served in the office of the Prime Minister longer than any other person in history. Beloved by the British people, he was known affectionately as "The People's William." #31-2964. \$148,500

11½"dia. x 11"h







Ambassadorial Secrétaire

British

King George I Cabinet

Circa 1716-1721

This important secrétaire-cabinet was specially ordered by George I for the British Ambassador to Russia. Exuding power in every detail, it features the royal coat of arms at its apex, while the interior is adorned by portraits of the royal family, including George I; his father, the Elector of Hanover; the Prince and Princess of Wales; and their children. Apart from its portraiture, the cabinet also features stunning painted decoration. Placed within the ambassador's St. Petersburg home, this secrétaire would have been a potent reminder of England's grandeur and political importance. It is pictured in *The Shorter Dictionary of English Furniture* by R. Edwards, the bible of British furniture design. #31-3643. \$348,500

42¹/₄"w x 21"d x 89³/₄"h





The Jupe Table

19th century | British

Expanding Jupe Dining Table

Circa 1850

This rare mahogany expanding dining table was designed by Robert Jupe and crafted by Johnstone & Jeanes, successors to Johnstone, Jupe & Co. One of only a handful known from the firm, this table brilliantly combines technical innovation with beautiful craftsmanship. Complete with two sets of original leaves, the table's uniquely carved circular top is formed from eight segments. When rotated, a swivel mechanism causes the sections to diverge, allowing small or large leaves to be inserted for an adjustable increase in size. #31-2887. \$288,500

65" dia. x 29³/₄" h | Semi-expanded: 78" dia.

Fully expanded: 93" dia.



Scan the QR code
to view a video.





Renaissance Security

Italian

Wrought-Iron Safe

Late 15th century

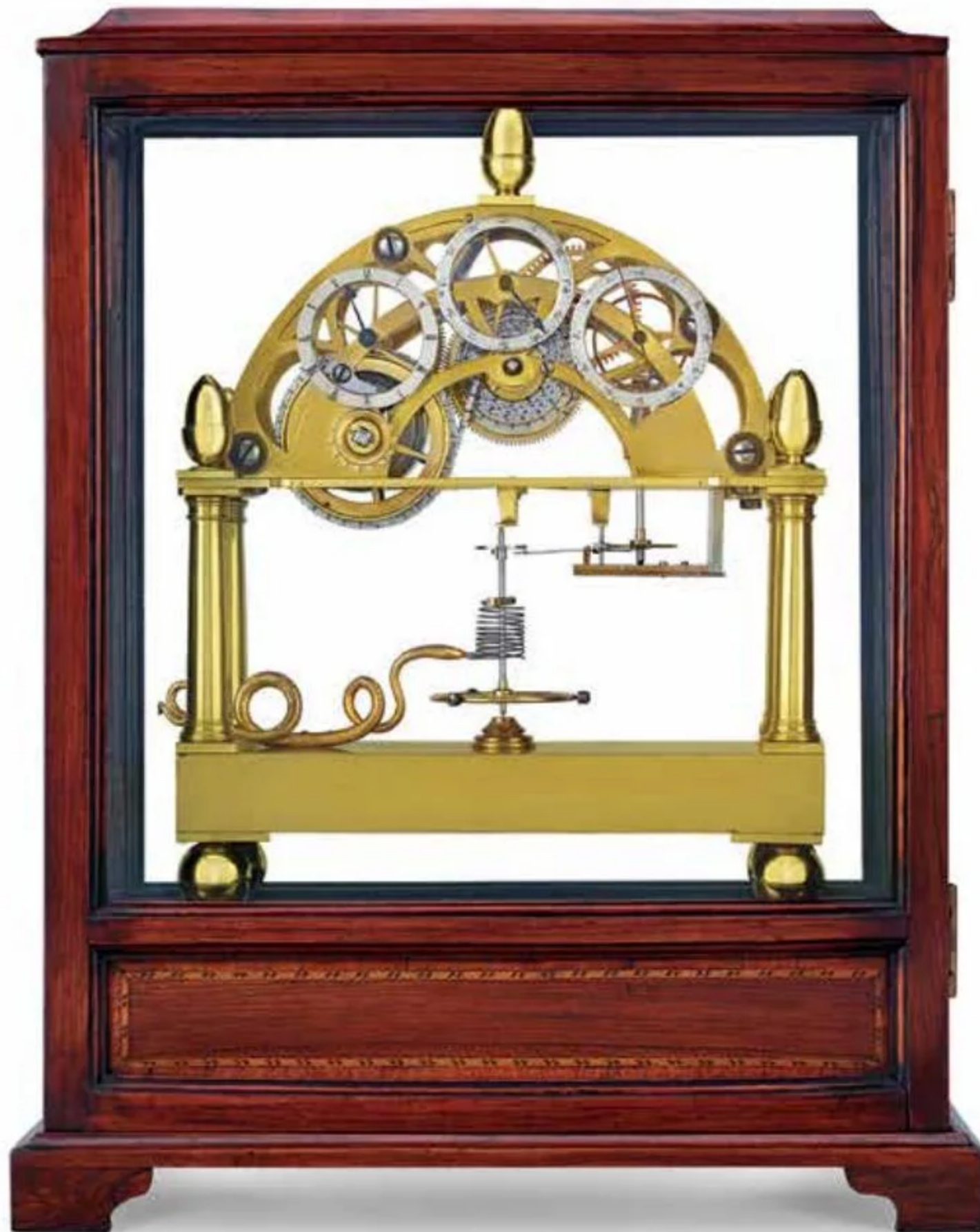
Incorporating a complex locking mechanism and iron reinforcements, this early safe was once the most secure way to store one's valuables. It is fitted with an exceptionally well-engineered four-key locking system that required all four keyholders to be present at the same time. As an added security measure, one must know the precise way in which to manipulate the safe's unique iron keys. Only a handful of these strongboxes have survived throughout the centuries, making them rarities on the market. #31-3571. \$98,500

42³/₄"w x 21¹/₂"d x 49¹/₈"h



Scan the QR code
to view a video.





James Condliff

1790-1861 | British

Skeleton Table Regulator Clock

Circa 1845

This complicated clock by James Condliff is completely unique. Condliff created only a small handful of table regulators around 1845; this example was made especially for Edward Scales, a Manchester-based clock maker who crafted its escapement. The highly accurate movement tells the time on three silvered dials, while a gilt brass serpent pins the movement's spring, adding visual intrigue. #31-3767. \$68,500

Clock: 9¹/₄"w x 4¹/₂"d x 11³/₄"h

Case: 13¹/₂"w x 7¹/₂"d x 17"h



Scan the QR code
to view a video.



i



Asprey & Company

f.1781 | British

Bejeweled Gold Clock

Hallmarked 1991

18K gold, enamel, diamond and pearl

Crafted by the royal jewelers Asprey & Company, this clock was almost certainly made for the Sultan of Brunei, a man known for his eye for rare luxuries. Taking its inspiration from the Art Nouveau style, the 18K yellow gold frame is supported by plique-à-jour enamel butterflies. Champlevé enamel, rock crystal and diamond and pearl accents all further enhance this sumptuous creation. #31-2371. \$49,850

5¹/₈" dia. x 10¹/₂" h





Von Zadora-Gerlof

b.1957 | Canadian

Carved Gemstone Mouse Clock

Rutilated quartz, labradorite, 18K gold and diamonds

Signed "Zadora"

Andreas von Zadora-Gerlof, the premier gemstone artist of the modern age, crafted this charming clock that celebrates both the natural and mechanical worlds. The rutilated quartz timepiece is finely carved into the shape of a block of cheese, while a hint of whimsy is achieved through the addition of two beautifully carved labradorite mice. #31-3772. \$38,850

6¹/₈"w x 6¹/₈"d x 4¹/₄"h





Camille Fauré

1874–1956 | French

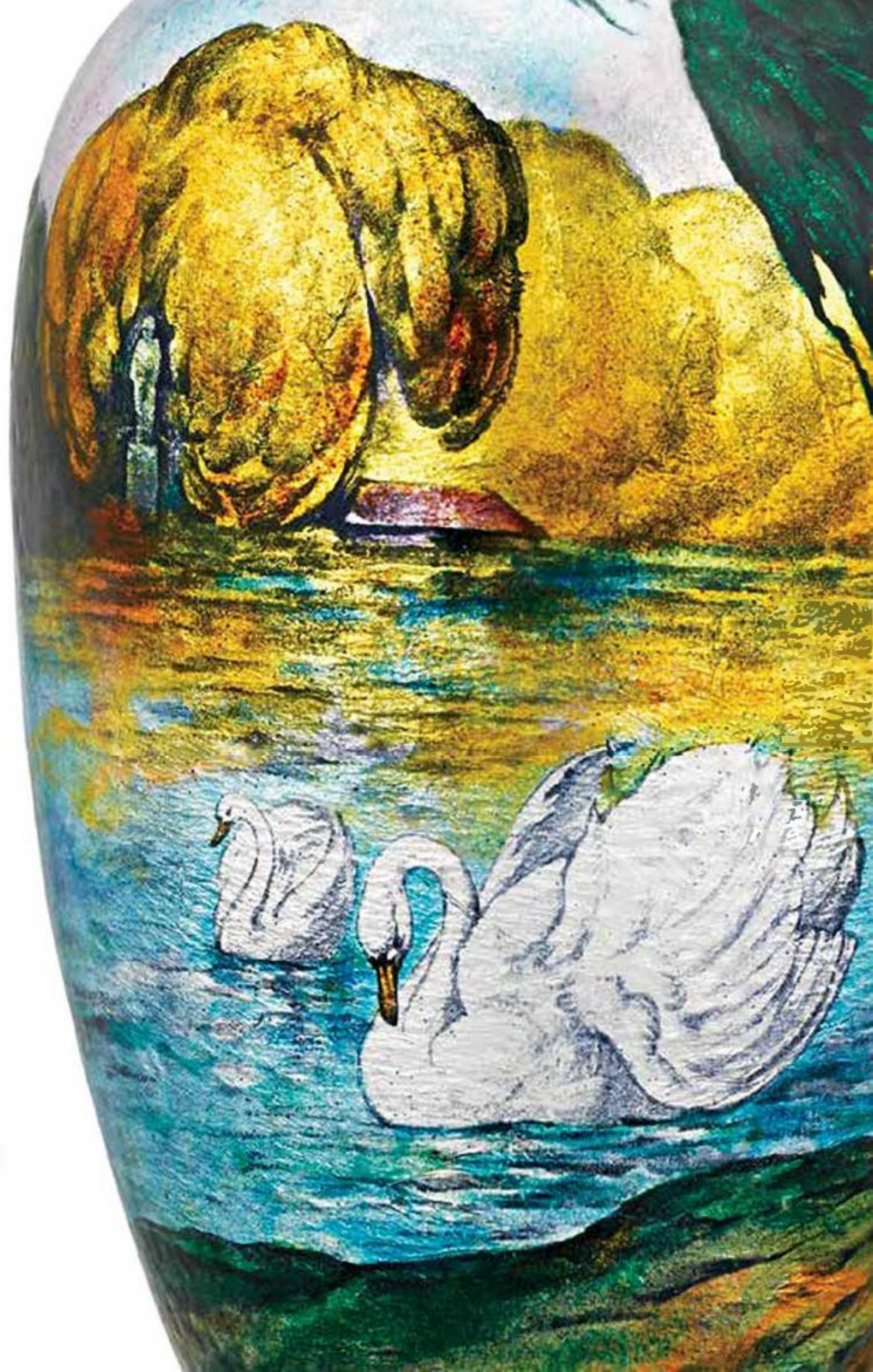
Enamel Swan Vase

Circa 1920

Signed “Fauré. Marty. Limoges”

Fauré is renowned as the premier enamel artist of his generation, celebrated for his vibrant vases during the height of the Art Deco period. He created the present example in collaboration with Alexandre Marty, who worked with Fauré between 1919 and 1925. Together, they developed new production methods that involved both flamed and frosted enamels. Today, those works signed by both artisans are highly prized. #31-3427. \$34,500

5”dia. x 8”h





Ancient Artform

Italian

Micromosaic and Pietre Dure Box

Circa 1870

This extraordinary micromosaic and pietre dure casket exemplifies the very best of 19th-century Italian workmanship. Mounted with chased and repoussé gilt bronze, the box features dramatic micromosaic scenes formed from thousands of tesserae — tiny pieces of glass, stone and tile. Each has been painstakingly matched for color, size and placement in order to create the intricate images set into the box. The micromosaics are joined by floral pietre dure panels on each side. #31-2846. \$54,500

13¹/₄"w x 8¹/₂"d x 7¹/₂"h





i



Semiprecious Stones

Italian

Silver-Mounted Hardstone Centerpiece

Circa 1880 | Amethyst, moss agate, jasper and silver

This one-of-a-kind agate and amethyst centerpiece is crafted in the Renaissance Revival style from semiprecious stones. A celebration of Dionysian decadence, the gilt silver mounting abounds with bacchanalian motifs, from grape leaves and berries to grotesque masks carved from agate and jasper. In both materials and theme, it demonstrates the 19th century's interest in classical and Renaissance forms, spurred by archaeological excavations in Greece and Italy that fueled the imagination of artisans and collectors. #31-3543. \$98,500

10⁵/₈"dia. x 13"h





Royal Blue Sapphire

Oval-Cut Sapphire Necklace

Sapphires: 20.13 carats | Diamonds: 8.07 carats
Platinum

Fourteen perfectly matched oval-cut sapphires exhibiting a desirable royal blue hue are set in this one-of-a-kind draping necklace that lays beautifully around the neck. An elegant, diamond-studded clasp secures the design.
#31-3488. \$148,500

16" length



Scan the QR code
to view a video.





Play of Color

Black Opal and Tsavorite Garnet Ring

Opal: 5.83 carats | Garnets: 9.32 carats
Diamond accents | 18K white gold

Displaying a kaleidoscope of color, this black opal cabochon possesses an impressive range of iridescent hues, from red and orange to blue and green. Its color is beautifully complemented by the eye-catching green Tsavorite garnets that surround it in its highly unique setting. #31-1732. \$124,500





Extraordinary Diamonds

Cushion-Cut Diamond Line Bracelet

Diamonds: 28.51 carats

Platinum

Twenty-eight white diamonds are set in this classic line bracelet. Certified by the Gemological Institute of America, they are among the very best of their type, displaying super white D-F colors and clarity grades of at least VS2, with the finest examples achieving an internally flawless. The gems are beautifully matched for size, color and quality. #31-3486.
\$348,500

6³/₄" length



BUY WITH CONFIDENCE

THE M.S. RAU STANDARD

M.S. Rau believes that exceptional, museum-quality treasures and superior customer service go hand-in-hand. This philosophy has allowed us to build life-long relationships with discerning clients from around the world by earning their trust and confidence one purchase at a time.



Follow us on social media to learn about our latest acquisitions, special exhibitions and more.

AUTHENTICATION AND RESEARCH

Everything in our gallery has been thoroughly researched and expertly vetted for quality and authenticity. Our researchers take great care in delving into the history of every work we acquire so you know exactly what you are purchasing.

ON APPROVAL

Many of our pieces can be sent to you on approval so you can experience the piece in your home. If not completely satisfied, you may return your item, in the exact condition as when it was shipped, for a full credit.

RETURNS AND OUR 125% GUARANTEE

Each piece we sell is backed by our 125% Guarantee. Anything you buy can be returned by you, in the same condition as when you purchased it, for a store credit on any other like item we own at the marked retail price, including 5% appreciation annually for up to five years following the sale.

PACKING AND SHIPPING

All of our packages are professionally packed on site by a specially trained member of our shipping team. We can ship any item to any destination in the world safely, expeditiously and fully insured.

25 TREASURES

FOR DISCERNING COLLECTORS



Fancy Intense Green Diamond Ring

Green diamond: 3.51 carats
Pink and white diamond accents
Platinum and 18K rose gold

Certified by the Gemological Institute of America, this untreated fancy intense green diamond is among the very few of its kind. Possessing VS2 clarity, it is set with equally rare fancy intense pink diamonds. #31-2656.

M.S. Rau
FINE ART • ANTIQUES • JEWELS

622 Royal Street • New Orleans, LA 70130
888-780-9587 • msrau.com

Postmaster: Please deliver prior to September 27, 2021
CHANGE SERVICE REQUESTED

Presorted STD
U.S. POSTAGE
PAID
New Orleans, LA
PERMIT NO.665

